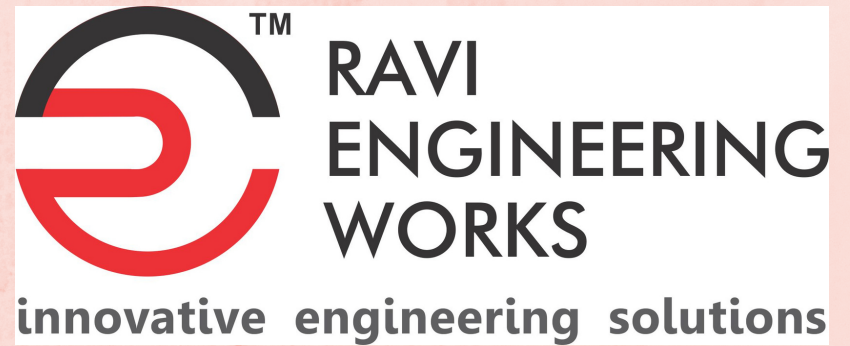




Since 1949



Near Loksatta Press, Nagarwada,  
Vadodara-390001 Gujarat India  
[www.raviengg.com](http://www.raviengg.com)

.....

# CERAMICS & POTTERY

.....

The company was founded by the present Director's father Shri Bharatbhai A Patel, way back in 1949.

Company has adopted an integrated approach towards the development of any machinery/component/mechanism.

REW'S approach to Design & Manufacture, is to create, modify, enhance and protect the visualization & imagination of artists through creative presentation of simple engineering. Adherence to stringent ethical standards, as well as the use of creative engineering tools make REW capable to optimally satisfying the engineering needs of artists worldwide.

# POTTERY WHEEL

## Elite/Pro

- 230 V Single Phase AC Electric Motor
- Fitted with Direct Drive, Variable Speed Gear Box
- 300 mm Dia.(12") Aluminum Disc
- Removable FRP Splash Pan Tray
- Lifting Handles & Leveling Bolts
- Clockwise-Anticlockwise Selector Switch
- 160 & 220 RPM Options with Variable Speed Knob or Foot Pedal Operated Options
- Centering Capacity : 6,8,12 kg. Various Options
- Weight : 14.4 Kg.



# TOP LOADING ELECTRIC KILN



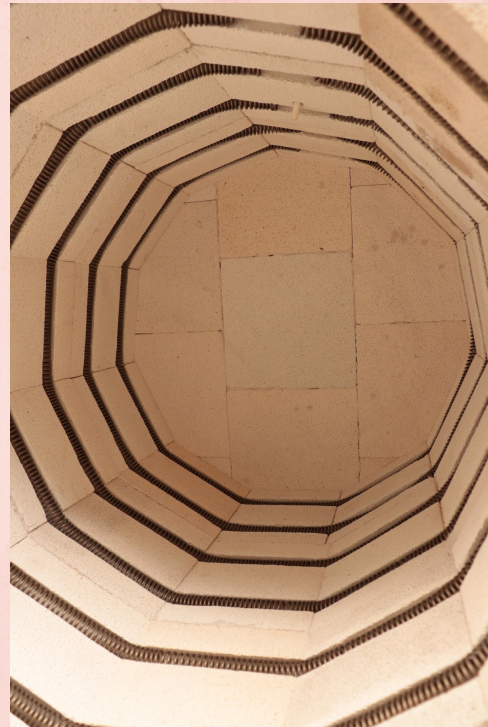
Sr. No	Inside Chamber	Power in KW
1	13"Opening x 9" Depth	3.5
2	13"Opening x 13" Depth	4.1
3	13"Opening x 18" Depth	4.6
4	18"Opening x 18" Depth	6.7
5	18"Opening x 22" Depth	8.0
6	18"Opening x 27" Depth	9.3
7	23"Opening x 18" Depth	9.7
8	23"Opening x 22" Depth	11.0
9	23"Opening x 27" Depth	11.5
10	27"Opening x 27" Depth	14.6



## Features :

- True Cone 10 (Max. Temp. 1300°C)
- Full Stainless Steel Body & Lid
- World Famous 'Kanthal Heating Elements'
- 3" Dual Wall Insulation ,
- R Type Thermocouple (Pt-Pt-Rh)
- Peep Holes with Plugs
- Programmable Controller Options : 'SelecIN' 4 Keypad

**All our kilns Come with Shelves, Posts, Wash & Gloves.**



# LPG GAS FIRED KILN



- Front Loading Down Draft
- Max. working temp. 1250°C
- Supplied with State of the art LPG Burner with ISI Mark pressure regulator & gauge and 3 meter long Pipe.
- Hearth : Fire bricks with Insulating Bricks
- Chimney with adjustable Damper
- Insulation : High temp. Cerawool Modules
- Door : Hinged with tightening wheels
- Fitted with R Type Thermocouple(Pt-Pt-Rh) & Digital Temp. Indicator
- Peep hole in door

**Inside Chamber Sizes : (W x D x H)**

1. 15"x 15"x 18"
2. 20"x 20"x 24"
3. 24"x 24"x 27"
4. 30"x 30"x 36"
5. 36"x 36"x 42"
6. 36"x 42"x 42"

**\*Custom sizes on Request**

# FRONT LOADING ELECTRIC KILN



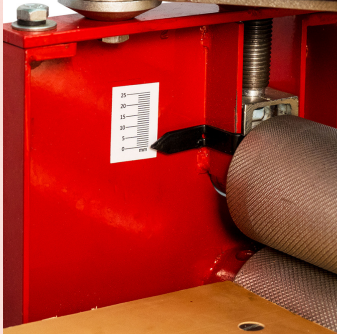
**Inside Chamber Sizes : (W x D x H)**

1. 12"x 12"x 12"
2. 18"x 18"x 18"
3. 18"x 24"x 24"
4. 18"x 24"x 27"
5. 24"x24"x27"
6. 24"x27"x36"
7. 24"x36"x36"
8. 27"x36"x42"

- Front Load
- Max. Working temp 1300°C
- 3" Dual Wall Insulation
- R Type Thermocouple(Pt-Pt-Rh)
- World Famous 'Kanthal Heating Elements'  
( Made in Sweden)
- 'Selec' 4 Keyapd Programmable Controller
- Mild Steel Body with Aluminum Paint
- Peep Hole & Plug

**\*Custom sizes on Request**

# CLAY SLAB ROLLER



**Hand Driven, Fitted With Gear Train, Slab Thickness Adjuster,  
Max. Slab Thickness: 1", Waterproof Table Top, Serrated  
Rollers for firm gripping with Canvas.**

SR. No	Size*	Type
1	18"X36"	Folding Stand
2	24"X36"	Folding Stand
3	24"X48"	Folding Stand
4	24"X60"	Folding Stand
5	24"X72"	Folding Stand

*\* Custom Size on Request*

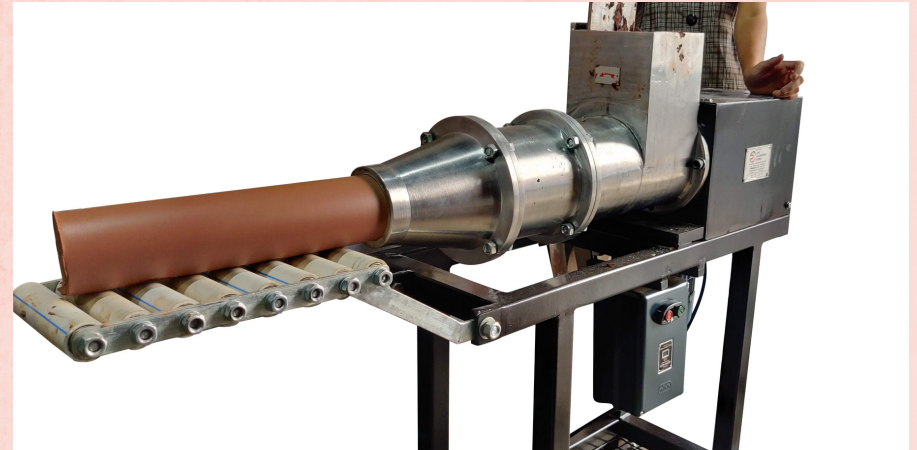




# PUG MILL

## Professional Model

- Extrusion Dia : 3"
- Body : Aluminum Alloy
- Auger : Stainless Steel 304
- Clay Bar Support Rollers
- Fitted with Electric Motor 1.5 hp, Three phase Gear Box & Starter Switch
- Input Hopper : 5"x5" with Clay Push Lever
- Capacity : 250 kg/hr
- Mounted on Sturdy Stand with Castor Wheels



## Table Top Model

- Extrusion Dia : 2"
- Body : Aluminum Alloy
- Auger : Stainless Steel 304
- Fitted with Electric Motor 0.5 hp, Single or Three phase Gear Box & Starter Switch
- Input Hopper : 3"x3" with Clay Push Lever
- Capacity : 100 kg/hr



# CLAY

- Stoneware
- Terracotta

# GLAZES

- Stoneware
- Earthenware
- Underglaze
- Onglaze
- Stains
- Oxide

# KILN FURNITURE

- Posts
- Shelves
- Y Crank

**BANDING WHEEL**  
**SCULPTING STAND**  
**POTTERY TOOLS SET**  
**HANDHELD EXTRUDER**  
**PYROMETRIC CONES**

**MANY MORE CUSTOMIZED PRODUCTS FOR  
CERAMIC & POTTERY STUDIO**



**Near Loksatta Press, Nagarwada,  
VADODARA -390001  
Gujarat State INDIA**

**[www.raviengg.com](http://www.raviengg.com)**



**ravietchingpress**



**+91-7043733247**



**info@raviengg.com**